



true 3D
no glasses

SeeFront
3D GETTING REAL



What do we do?

SeeFront develops customer-specific OEM 3D display solutions and licenses its patented 3D technology to third parties. SeeFront's customers create a variety of innovative 3D display products and solutions, from professional applications to consumer electronics. SeeFront also supplies B2B customers with SeeFront 3D displays. All applications have one thing in common: True 3D, no glasses.

Licensing

SeeFront licenses its patented glasses-free 3D display technology to third parties. SeeFront's services include not only the customization of the technology according to product requirements and the license itself. SeeFront also offers consulting and support regarding product development. Licensing this platform technology is a cost efficient way for companies to develop innovative 3D products with short time-to-market and low risk.

Development

SeeFront's team develops glasses-free 3D solutions for customer-specific requirements based on SeeFront 3D®. Successful projects include developing a dashboard cluster instrument for the research car Mercedes F 125! together with Daimler and a large automotive supplier and developing OEM 3D displays exclusively for IGT slot machines.

Products

Evaluation Kit SF3D-156MP

The new 15.6" 3D display has been designed to showcase the capabilities of SeeFront 3D® for a wide range of applications. The detached image processing unit allows for a variety of testing situations. The 3D monitor is based on a 4K Ultra HD LCD panel that guarantees a stunning 3D image quality. The SF3D-156MP is pre-series and will be on offer as a SeeFront technology evaluation kit from Q3/2018.



32" UHD Monitor SF3D-320MP



The new 32" auto-stereoscopic 3D monitor delivers a true 3D experience at the utmost freedom of movement for a single user.

SeeFront 3D® Technology combined with a 4K Ultra HD LCD panel with 3840 x 2160 pixels offer color fidelity, high brightness and true 3D depth at the highest possible resolution. The monitor supports several stereo content formats. An open-frame version of this 3D display is also available.

23" Open-frame Display SF3D-230CP

This 23" open-frame 3D display with integrated eye-tracking camera has been developed for integration into True 3D™ slot machines.



Application Cases

In Vehicle



Instrument cluster in research car Mercedes-Benz F125!

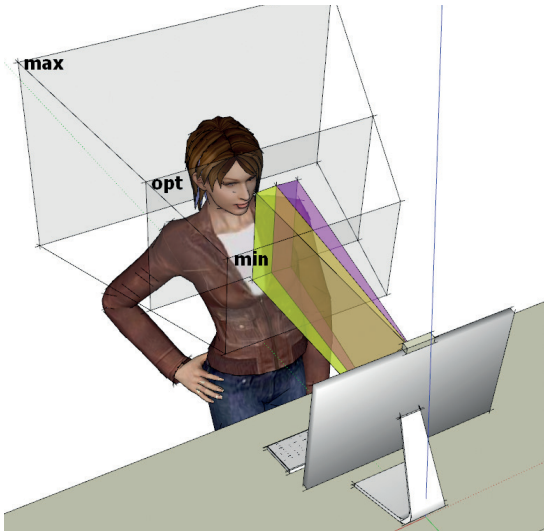
Consumer

3D Panel for
Sony VAIO
S-Series laptop
computer



Casino Gaming

Custom-designed
OEM 3D display
for IGT
True 4D™ slot
machines



SeeFront 3D® Technology

The patented SeeFront 3D® Technology integrates three essential components for high-quality 3D without glasses:

- **Tracking unit** detects the user's position in front of the display
- **Optical filter** on top of the LCD panel separates the two images for left and right eye
- **SeeFront 3D algorithm** merges the two images for left and right eye in real time and displays them on the LCD

Benefits of SeeFront 3D®

- High 3D resolution, true colors and brightness
- Display shows original spatial depth of the content, whether this is a 3D movie or a 3D endoscope live stream
- Freedom of movement in all directions within a configurable "headbox"

Contact:

SeeFront GmbH
Heidenkampsweg 74-76
20097 Hamburg
Germany

T +49 (0)40 416226480
info@seefront.com
www.seefront.com

© SeeFront 2018

SeeFront
3D GETTING REAL

